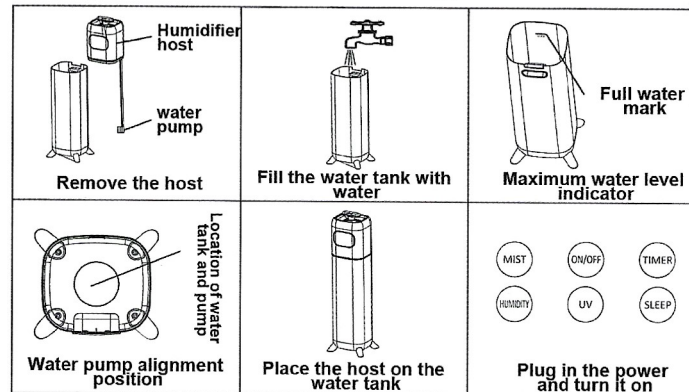


## Product Working Principle

The ultrasonic air humidifier utilizes the principle of producing 1.7 million high-frequency oscillations per second through ultrasonic oscillation, atomizing water into 1-5 micron ultrafine particles. Then, the water mist is diffused into the air through a pneumatic device, achieving the goal of uniformly humidifying the air

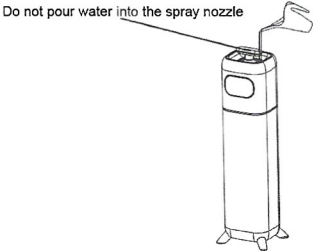
## Product usage method

1. Place the machine on a level ground, remove the main unit and remove the protective bag from the water pump. Inject an appropriate amount of clean tap water or pure water into the water tank. When injecting water, the power plug must be unplugged. Add water to the "MAX" or "highest water level" marked on the water tank
2. Place the host on the water tank smoothly (the water pump should be placed inside the water tank), wipe off the water on the surface of the machine, and then plug the power plug of the machine into the socket. Before connecting the power, ensure that the working voltage of the machine matches the operating voltage
3. Turn on the power switch/fog volume adjustment switch, and the power indicator light will be on (the display screen will be on). The machine will start working and the fog volume can be adjusted freely
4. When the water level in the machine's water tank is too low, the machine will automatically cut off the power and stop working, while the water shortage indicator light is on (red). Please turn off the power switch first, unplug the power plug, and then add water to the water tank.

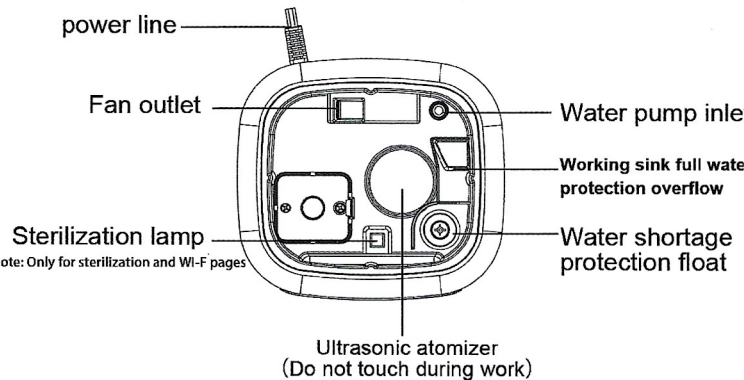
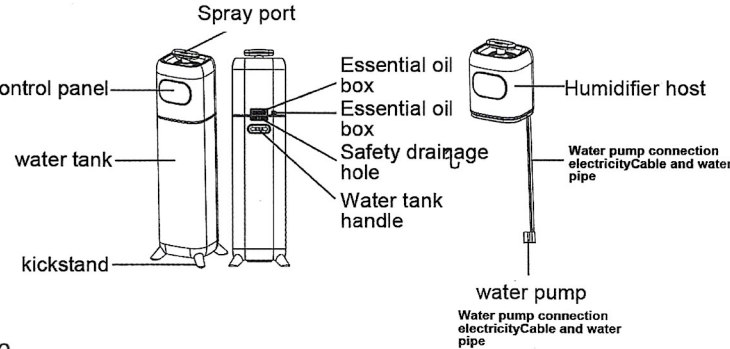


Rapid water addition method

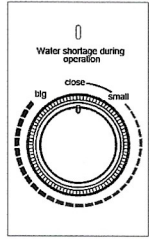
- 1. Turn off the power supply of the product, unplug the power plug, and slowly add water to the top of the host. To use the product for the first time, you need to remove the water pump protection bag
- 2. When adding water, do not pour water into the spray nozzle, and observe that the water level line of the water tank cannot exceed the "MAX" full water level line
- 3. After adding water, plug in the power and start the machine



Product component name

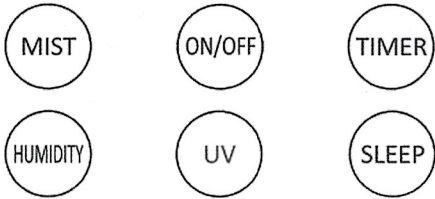


Mechanical panel operation instructions



- 1. "Running/water shortage" indicator light: the machine is white when working normally, and red when water shortage occurs
- 2. The stock market of the island selling equipment has shifted to reducing fog (turning counterclockwise to the end to close); Rotate clockwise to increase fog volume

# Intelligent panel operation instructions



1.Power button: After turning on the power, lightly touch the power button, and the LCD screen will light up. The machine will work and then lightly touch the power button again. The humidifier will stop working and enter standby mode

2.Fog volume key: The product is divided into three levels: low fog volume, medium fog volume, and high fog volume. The fog volume can be adjusted by pressing the fog volume key each time for cycle adjustment. The product defaults to working at the highest fog volume when turned on

3.Timing key: This product has an appointment timing function, which can be timed to shut down for 1 hour, 2 hours to 12 hours. Touch this key lightly to set the shutdown time. Each time you press this key, the display screen will display the corresponding time

4.Constant humidity key: The first time you press this key, the product enters the constant humidity function. The "humidity" icon on the LCD screen lights up, and the default humidity is 40%. Then, press 5% to increase until 90%, and display "-" to exit the constant humidity function. This cycle of adjustment is used to stop working when the ambient humidity reaches the preset humidity value.

5.Sterilization button: When in working mode, lightly touch this button to turn on or off the sterilization function, and the product will default to off when turned on

6.Sleep function: When this product is in working mode, lightly touch the "Sleep" button to activate the sleep function display screen and close it. The product remains in its original working state and continues to work. Press any U function button to exit the sleep display screen and light up

# Fault analysis and troubleshooting methods

Fault phenomenon	fault analysis	processing method
Is the display screen not lit windless and foggy?	The power supply is not connected or there is a problem	Reconnect the power supply. If it still cannot function properly, please contact the after-sales service center in a timely manner
Water shortage alarm	Water cannot reach the interior of the host (working sink)	Pick up the host and check if the water pump protection bag is removed. Press the power button to observe if the water pump is working.
	There is no water or only a small amount of water in the working water tank of the host	Turn on the machine and observe whether there is water flowing out from the upper water outlet of the water pump in the working water tank of the host.
	There is no water flowing out from the water inlet of the water pump	Check if the water pump connection pipe is properly connected
	Abnormal water shortage protection function	Check if the floating ball in the water tank of the main machine can float up and down normally due to water shortage protection
Small amount of spray	Excessive scale or impurities in the atomization plate	Clean the atomizer and replace it with clean water
Low and weak spray	There is a foreign object in the air inlet of the main engine	Check if there are foreign objects blocking the air inlet (essential oil box) of the main engine
Abnormal noise	There is too little water in the water tank, and the surface is unstable when placed	Add water to the water tank and place the humidifier on a solid and stable surface
Note: If none of the above methods are resolved please contact the dealer's online customer service in a timely manner		

# Safety instructions

1. Please do not pull the plug with wet hands to avoid the risk of electric shock
2. Do not disassemble, repair, or modify this product without authorization
3. When starting up, do not touch the atomizer with your hands, as it may cause you to feel pain
4. The power cord should not be scratched, damaged, knotted, or pressed with heavy objects or clamped or processed, otherwise it may cause electric shock, short circuit, or fire
5. Do not replace the power cord without authorization. Contact the manufacturer or after-sales customer service; If there is any abnormal phenomenon, please immediately unplug the plug and remove it
6. If the power cord is damaged, in order to avoid danger, it must be replaced by professionals from the manufacturer, its maintenance department, or similar departments
7. Do not separate the water tank from the base during work, do not touch the water and components in the base
8. This machine is for indoor use only
9. Please unplug the power plug during thunderstorm weather or long-term non use;
10. Do not flip the appliance while it is powered on or with water inside to avoid burning it
- Destroy internal electronic components;
11. Please keep this product out of reach of children and do not allow them to use or operate it to avoid accidents;
12. Unplug the power plug during water injection and cleaning;

## Tips

### Regarding the accumulation of water on the base:

The humidifier uses ultrasonic atomizer vibration to disperse liquid water into mist. The water tank is just a transitional water storage tool, and all humidifier base water tanks will accumulate water. Please rest assured to use it.

### Regarding the adjustment of fog volume:

If there is water around the machine during use, it indicates excessive humidity in the room. Please adjust it appropriately. Mist size.

### Regarding the remote control battery:

Please refer to the instructions on the back of the remote control for battery replacement methods and battery models

## note

- 1) The power supply voltage must be consistent with the rated voltage of this product. If the power supply voltage does not match, please contact the dealer and do not use the product;
- 2) Please leave the humidifier at room temperature for 30 minutes before use to prevent damage to the water tank caused by sudden temperature changes
- 3) Please use at normal room temperature (5°C~40°C)
- 4) Please place it in a flat position to avoid tilting;
- 5) Please do not use the humidifier directly on the wooden floor to avoid moisture, deformation, and damage
- 6) Please place the humidifier 2 meters away from furniture and appliances to avoid moisture
- 7) Please place it away from heat sources and avoid direct sunlight
- 8) Do not inject hot water above 40°C into the water tank or sink to avoid damaging the machine
- 9) Do not allow water to flow into the body from the air outlet. If there is water in the body, please use a cloth to wipe it clean to avoid damaging the machine,
- 10) When the room temperature is below 0°C, please pour out the water in the water tank and sink to avoid freezing and causing damage to the machine;
- 11) Please do not put metal products, chemicals, or detergents into the sink, as it may cause poor atomization
- 12) When pouring out water from the sink, please turn off the power and unplug the plug first
- 13) If the humidifier needs to be moved, cleaned, or watered, it must first turn off the power and unplug the power plug. Do not move the machine freely during work
- 14) It is strictly prohibited to inject water into the mist outlet and air outlet
- 15) When cleaning, please avoid water entering the interior of the appliance
- 16) Do not disassemble the original parts of the machine body at will.

## Cleaning and maintenance

1. Every week, the water tank, sink, and atomizer should be cleaned, and the power plug must be unplugged before cleaning
2. External cleaning of humidifier: Wipe the external surface clean with a clean soft damp cloth below 40 ° C



3. Do not use hard objects during cleaning to avoid damaging the components;

4. Do not use chemical detergents for cleaning

5. Please frequently replace the old water in the water tank. Keep the interior of the humidifier clean

6. When not in use for a long time, please keep the inside of the humidifier dry

## Method for descaling atomization plates and machine seats

- Before cleaning, be sure to turn off the power and unplug the power plug
- Pour the scale remover into the machine base, then add about 60% warm water to dissolve all the scale remover, and soak for 5-10 minutes:
- Then use a cleaning brush to scrub the surface of the atomizer until the scale is removed
- Simultaneously clean the base and rinse the surface of the base and atomizer with clean water

## Table of Harmful Substance Content in Products

Component Name	Hazardous Substances or Elements					
	lead (Pb)	mercury (Hg)	tin (Cd)	hexavalent chromium (CrVI)	Polyaromatic biphenyl (PBB)	Duoao Diphenyl ether (PBB)
Shell plastic parts	○	○	○	○	○	○
fan	x	○	○	○	x	x
Power cord components	x	○	○	x	○	○
Circuit board assembly	○	○	○	x	○	○
Hardware and fasteners	○	○	○	○	○	○
Silicone parts	○	○	○	○	○	○
Internal wiring	x	○	○	○	○	○
<p>(This table is prepared in accordance with the provisions of SJ/T11364.</p> <p>○: Indicates that the content of the harmful substance in all homogeneous materials of the component is within the limit requirements specified in GB/T 26572.</p> <p>x: Indicates that the content of the hazardous substance in at least one homogeneous material of the component exceeds the limit requirements specified in GB/T 26572</p> <p>Note: The harmful substance content in the products listed in this table does not include batteries that require regular replacement</p> <p>Under the normal usage conditions described in this manual, the environmentally friendly service life of this product is 10 years. During the environmentally friendly service life, it can be used with confidence. After exceeding the environmentally friendly service life, it should enter the recycling system.</p>						

## warranty policy

1. This machine is in normal use from the date of purchase (based on the invoice date or transaction), with a one-year warranty for quality issues

2. following situations are not within the scope of free warranty, but you can still enjoy discounted repair services that only charge material costs

- ① Failure to follow the operating steps and precautions in the manual resulted in product malfunction
- ② Product failures caused by unexpected disasters, force majeure, and other factors, such as high voltage fires, floods, earthquakes, etc
- ③ Beyond the warranty period
- ④ Customers make unauthorized changes, misuse, or accidental damage
- ⑤ The usage environment exceeds the product specifications

3. Keep the warranty card properly and do not reissue it if lost

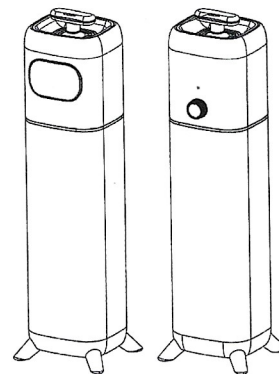
4. Product upgrades and specifications are subject to update without prior notice. The actual form and color of the product may differ slightly from the actual product. Please refer to the actual product as the standard

## warranty policy

Customer Name	Telephone	
purchasing date	Model	
Customer Address		
Purchase Store		
Maintenance records	①	
	②	
	③	

## Table of Product Parameters

product name	ultrasonic humidifier
Specification	QT-JS2102
rated voltage	
Rated frequency	
rated power	28W
Water tank capacity	9.0L
Maximum atomization amount	300mL/h



QT-JS2102

## User Manual for Ultrasonic Humidifier

Product upgrades and specifications are subject to update without prior notice. The actual form and color of the product may differ slightly from the actual product. Please refer to the actual product as the standard